

WINDBREAKER

by April Klich

With Wool



Windbreaker is a ridiculously stretchy cabled hat that'll keep you warm in cold winds. Worked in 2x2 rib, the hat is an easy knit with just enough cables to keep things interesting. Wear it as a slouch or with the brim folded for an extra layer against the cold.

Sizes

Medium (Large) - Shown in size Large which fits a head circumference up to 24" (61 cm)

Gauge

13 sts and 13 rows = 2" (5 cm) in 2x2 rib, unstretched

Materials & Notions

130 (145) yds / 119 (133) m worsted weight yarn

Shown in Berroco Ultra Alpaca - *Oceanic Mix*

US 7 (4.5 mm) 40" circular needle (for magic loop) OR 16" circular needle and DPN's

Cable needle

Tapestry needle

Contact

Have a question or need help?
Send me a message.

april@withwool.com

www.withwool.com/tutorials

And you can find me, @AprilKlich, on [Instagram](#), [Twitter](#), and [Ravelry](#).

I love seeing your WIP's and FO's so please tag me and use #withwoolknits

Happy knitting!

Abbreviations + Chart Legend



k = knit



p = purl



k2tog = knit 2 stitches together



ssk = slip 1 st knit-wise, slip 2nd st purl-wise, insert the left needle into the front of both sts and knit together



cdd = slip 2 sts together as if to knit, k1, pass slipped sts over knitted st



p2tog = purl 2 sts together



No Stitch



RC6 = slip 4 sts (2 knit sts, 2 purl sts) to cable needle and hold in front, k2 from left needle, slip the 2 purl sts to left needle and p2, k2 from the cable needle



RCD = slip 3 sts to cable needle (2 knit sts, 1 purl st) and hold in front, ssk from left needle, slip the purl st to the left needle and p1, k2tog last 2 sts from cable needle

st(s) = stitch(es)

DPN = double pointed needles

The Brim + Body

Cast on 96 (108) sts with the long-tail cast on. Join to knit in the round, and work in 2x2 rib (repeat k2, p2) until hat measures 4" (10 cm).

Begin cable repeat working from chart or written instructions. Work repeat 8 (9) times per round, and complete the entire 8 round repeat 3 times.

Work 1 more cable twist row. Hat measures 8" (20.5 cm) from cast on edge.

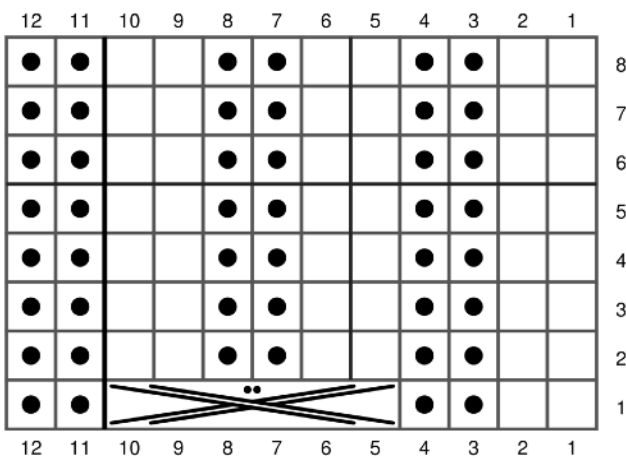
More Cables Variant: If you don't want to fold the brim in half and want a longer section of cables, work until the brim measures 2.25" (5.75 cm). Then work 4 complete repeats of the cable pattern, and 1 more cable twist round.

Ribbed Cable Written Instructions

Round 1: *k2, p2, RC6, p2* repeat between * * on all rounds

Rounds 2 - 8: *k2, p2 3 times*

Ribbed Cable Chart



The Crown Decreases

Begin crown decreases working from chart or written instructions. Work repeat 8 (9) times per round. If using 16" circulars, switch to DPN's when necessary.

Round 1: *(k2, p2) 3 times* (12 sts)

Round 2: *k2, p2, k2, p2tog, k2, p2* (11 sts)

Round 3: *k2, p2, k2, p1, k2, p2*

Round 4: *k2, p2tog, k2, p1, k2, p2tog* (9 sts)

Round 5: *(k2, p1) 3 times*

Round 6: *k2tog, p1, k2, p1, k2, p1* (8 sts)

Round 7: *k1, p1, k2, p1, k2, p1*

Round 8: *k1, p1, RCD, p1* (6 sts)

Round 9: *(k1, p1) 3 times*

Round 10: *k1, p1, cdd, p1* (4 sts)

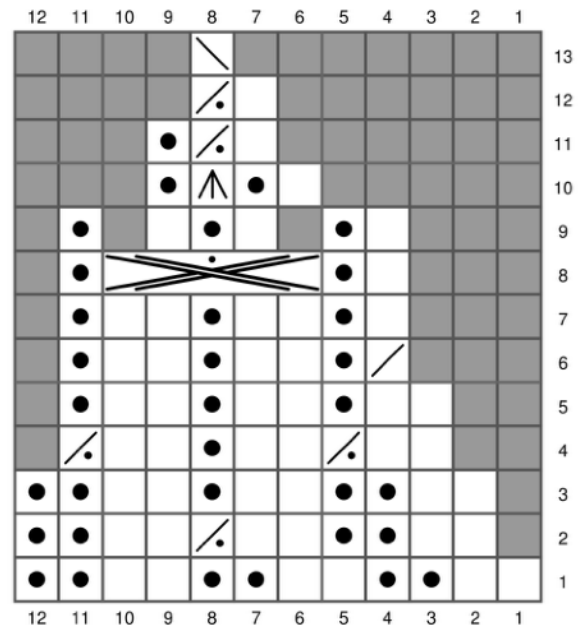
Round 11: *k1, p2tog, p1* (3 sts)

Round 12: *k1, p2tog* (2 sts)

Round 13: *ssk* (1 st)

After completing Round 13, cut yarn and pull through the remaining 8 (9) sts. Weave in ends and block.

Crown Decrease Chart





Copyright

All photos, diagrams, and the knitted design of this pattern are subject to copyright. Do not distribute this pattern digitally or in hardcopy. The pattern may be used only for personal, non-commercial uses, unless express written permission from the designer has been received. The patterns may not be used for commercial production without permission.

Want to knit something for a charity benefit or take a commission from a friend? No problem.